

Chemical Feed Systems

Burt Process Equipment Manufactures Chemical Feed Systems in a Variety of Configurations & Materials for Industries including:

- Municipal Water & WWT
- Industrial Water & WWT
- Power Generation
- Chemical & Petrochemical
- Pulp & Paper

BPE Offers a Variety of Metering Pump Technologies Including:

- Solenoid Diaphragm
- Mechanical Diaphragm
- Hydraulic Diaphragm
- Gear
- AODD

Pump Manufacturers Including:

- Milton-Roy / LMI
- Pulsafeeder / Pulsatron
- IR / ARO

A Wide Range of Wetted Materials Including:

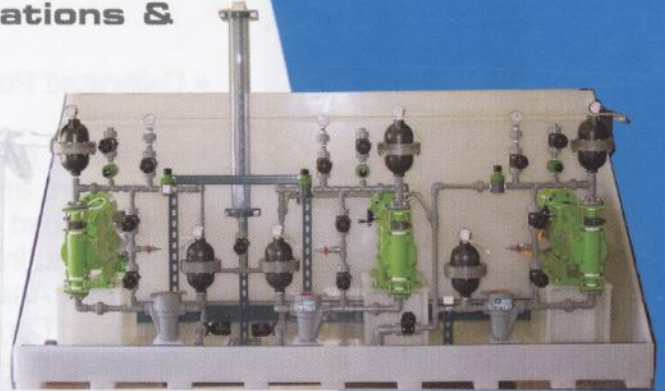
- PVC
- CPVC
- Stainless Steel
- Alloy-C
- PVDF

Pump Configurations Including:

- Simplex
- Duplex
- Triplex
- Multiplex

Many Optional Accessories Including:

- Pulsation Dampeners
- Isolation Ball Valves
- Pressure Gauges
- Calibration Columns
- Pressure Regulators
- Pressure Relief Valves
- Strainers
- Check Valves
- Flow Switches
- Chemical Storage Tanks
- Mixers
- Containment Pans



**Municipal Drinking Water
Chemical Feed**



**Industrial Wastewater
Reagent Feed**

The information in this document is subject to change without notice. Burt Process Equipment believes the information contained herein to be reliable, but makes no representations to its accuracy or completeness. Burt Process Equipment's sole and exclusive warranty is as stated in the Standard Terms and Conditions of Sale of these products. In no event is Burt Process liable for any indirect or consequential damages relating to the use of these products.

Chemical Feed Systems



- Calibrated Polyethylene Tanks with Level Controls
- Electronic Metering Pumps from LMI, Pulsatron, and others
- Pre-plumbed Including Multi-function Valves and Injectors
- Flow and Analytical Transmitters
- Batch or Continuous Flow Proportional Chemical feeds
- Skid-Mounted, Factory Tested Systems
- Custom to fit your Requirements

Sodium Hypochlorite Feed

- NEMA 4X Enclosures with Clear PVC doors
- Electronic Diaphragm Metering Pumps
- Proportional Control (4-20 mA or Frequency)
- Flow Monitoring Switches
- Pre-plumbed including Multi-function Valves and Calibration Columns
- Other options include Instrumentation and other types of Pumps



Enclosed Multi-Pump Proportional Feed

- Integrated System Control with PLC
- Operator Display Touch Screen with Customized Menu
- Corrosion Resistant, Flame Proof, and Explosion Proof Cabinets
- Tanks or Drains with Level Controls and Containment
- Several types of Proportional Feed Pumps
- Customized Systems, Pre-plumbed and Pre-wired



Batch Recipe Feed Enclosure

Please contact your local
Burt Process Equipment Engineer
for more information

e-mail- info@burtprocess.com
www.burtprocess.com
www.phplus.com

Headquarters:
1050 Sherman Ave
PO Box 185100
Hamden, CT 06514
tel- 203.287.1985
fax- 203.288.7354

New York:
598 Columbia Turnpike
East Greenbush, NY 12061
tel- 518.477.5005
fax- 518.477.5008

New England:
404 Middlesex Rd
Tyngsboro, MA 01879
tel- 978.649.9660
fax- 978.649.7430

Mid- Atlantic:
1 Cornell Parkway
Springfield, NJ 07081
tel- 973.564.7700
fax- 973.564.7704